



CADDY CORPORATION

Food Service Equipment

Air Systems

PowerTurn Loader

PowerTurn

Loader

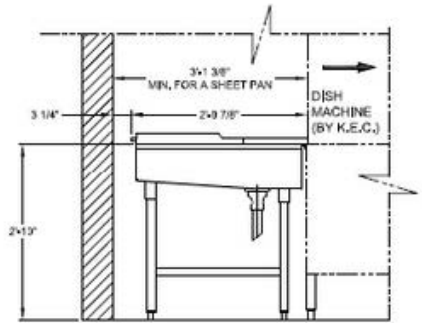
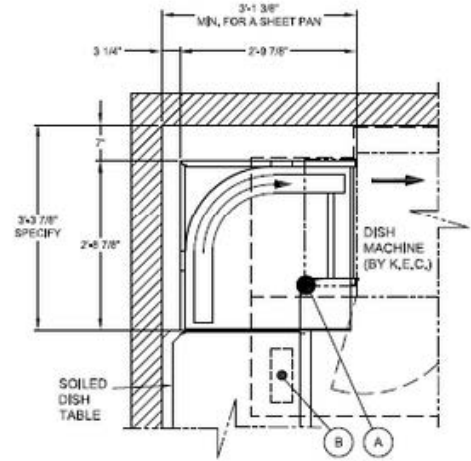


Description

The PowerTurn Loader allows dish racks to make tightest 90° within 37-1/8" footprint at the dishwasher loading side. Its 90° turn knuckle belt conveyor transports dish racks into the dishwasher. It allows flexibility in dishroom designs to conserve floor space and is ideal for small dishroom application. The PowerTurn Loader is available in L-R and R-L models. The unit interconnects to any conveyor type dishwasher.

Standard Features

- 14-gauge stainless steel construction
- Attached to loading side of a dishwasher by stainless steel bolts
- The 90° turn makes a smooth transition to the dishwasher
- System is interwired to a dishwasher; it runs when dishwasher runs
- 90° turn knuckle belt conveyor's pivot-radius drive chain provides motive power to pull 20" x 20" dish racks around a tight radius so that overall dimension from end of dishwasher to far side of PowerTurn Loader is approximately 39"..



Typical Elevation View

ROUGH-IN SCHEDULE	
SYM	DESCRIPTION
A	1 1/2" I.P.S. WASTE 12" A.F.F.
B	15A/208V/1Ø/60Hz 24" A.F.F.

Voltages Available: - 208V, 3φ & 480V, 3φ
- 120V, 1φ at additional cost.

CAD and Revit Files Available Upon Request

WARNING

Electrical and grounding connections must comply with the applicable portions of the National Electrical Code and/or other local electrical codes.
Plumbing connections must comply with applicable sanitary, safety, and plumbing codes.

